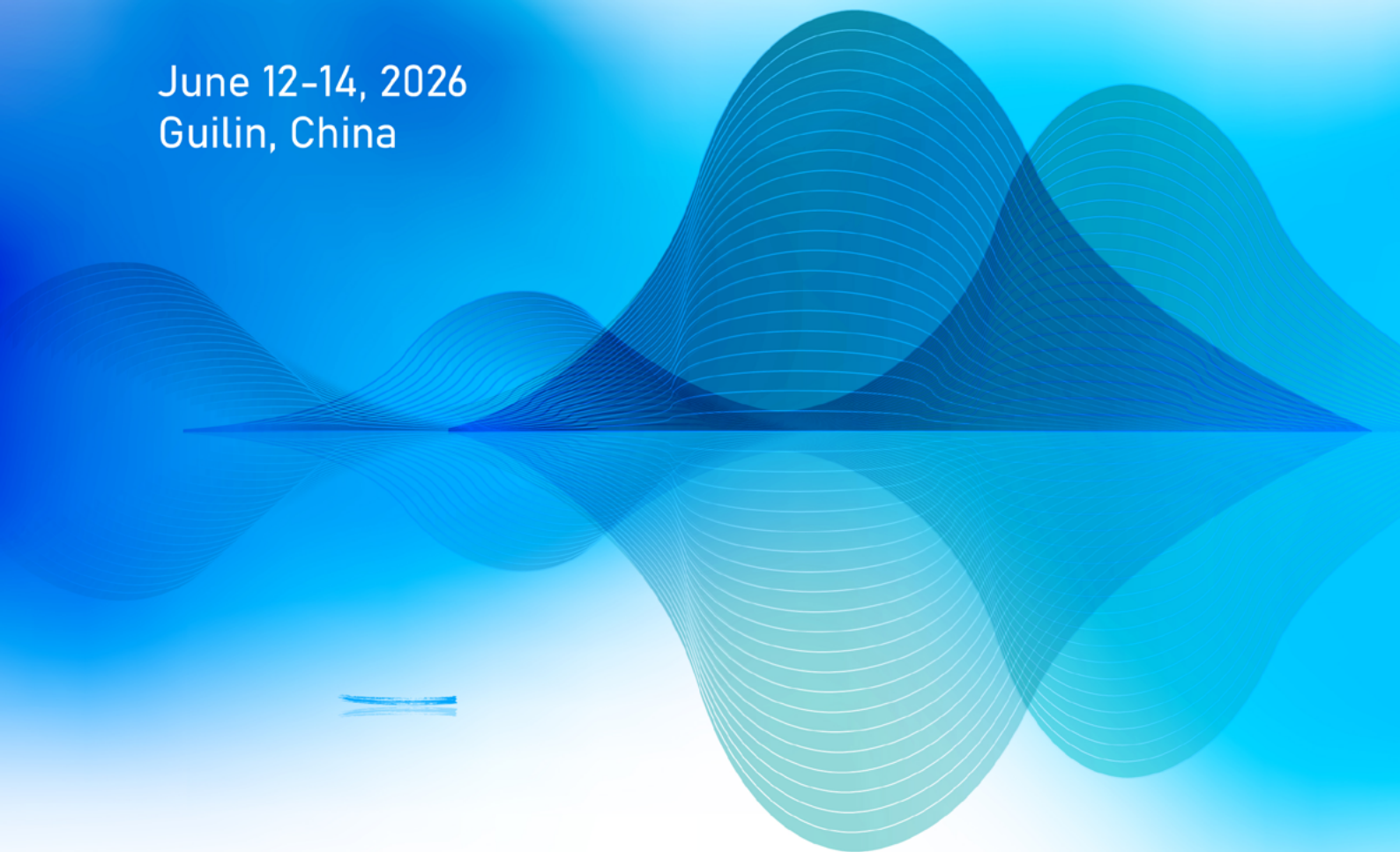




2026 AIPPI Trilateral Meeting

AIPPI China · AIPPI Japan · AIPPI Korea

June 12-14, 2026
Guilin, China



Greetings from AIPPI China

Dear AIPPI Members from Japan and Korea, and Distinguished Observers,

On behalf of AIPPI China, it is my great pleasure to extend a warm welcome to all of you as we gather for the AIPPI China-Japan-Korea Trilateral Meeting in the beautiful city of Guilin, Guangxi.

The Trilateral Meeting has become a vital and heartfelt forum for IP exchanges and cooperation. Together, the three countries account for over 60% of global patent applications and over 50% of global trademark applications, proudly driving the development of the global IP system. These warm exchanges have greatly improved the IP ecosystem, firmly supported regional innovation and trade, and injected fresh energy into innovation-driven development. By welcoming IP professionals from beyond the region, the Meeting not only deepens the friendship among the three nations but also builds sincere bridges with the wider world.

Guilin, known around the world for its stunning landscapes, often called "the most beautiful scenery under heaven", provides a truly inspiring setting where natural wonders meet rich cultural heritage. We hope you will take time to experience the unique charm of this historic city during your stay.

We are thrilled to welcome you to Guilin and to share this unforgettable experience with you.

Chuanhong LONG
President, AIPPI China



Contents

01	Date & Venue Date Venue About Guilin
02	Overview of the Events
03	Program
06	Excursion & Golf Tour of the Lijiang River Golf
07	Registration General Registration Fees Payment Method Cancellation Policy
09	Accommodation Hotel Reservation Accommodation Fees
10	Transportation Flight High-speed Train How to Get to the Hotel
11	Visa Application
11	Contact

Date & Venue

Date

June 12–14, 2026

Venue

Guilin Exhibition International Hotel

Address: 28 Lijiang Road, Qixing District, Guilin, China

Phone: +86 773 696 8529

Email: sales@glhzhotel.com

Website: www.glhzhotel.com

Guilin Exhibition International Hotel is a luxurious boutique business hotel dedicated to creating an urban peaceful retreat. Located in the city's prime location, it is surrounded by exhibition venues, dining restaurants, sports facilities and entertainment amenities, enjoying a privileged geographical position. The hotel is jointly crafted by a world-renowned design team and excellent landscape and lighting teams. It also incorporates the natural scenery and cultural elements of Guilin's landscapes, flowers and famous trees, elaborately creating an unprecedented sense of wandering from the city into nature and delivering a wonderful stay for every guest.

About Guilin

Guilin literally means "forest of sweet osmanthus". As one of China's most renowned tourist destinations and a celebrated historic and cultural city, Guilin boasts a glorious history of over 2,000 years. It is a top choice for travelers both in China and around the world, and has been recognized by the UNWTO as a recommended destination. Guilin's fame rests on four distinctive features: green hills, clear waters, fantastic caves, and spectacular rocks. These natural wonders create picturesque landscapes such as the Lijiang River and karst formations – classic icons of China's natural beauty. As you wander through the city, you are constantly greeted by breathtaking hills with surreal rock formations. Amid the sweet fragrance of osmanthus, the gentle sounds of the river, and the majestic hills, you will find yourself completely spellbound. Guilin's claim to having the "finest mountains and rivers under heaven" is truly indisputable.

Overview of the Events

Friday, June 12, 2026

Registration Desk

Time: 16:00–18:00

Welcome Reception

Time: 18:00–20:30

Saturday, June 13, 2026

Registration Desk

Time: 08:00–09:00

Meeting

Time: 09:00–17:30

Lunch

Time: 12:10–13:30

Closing Dinner

Time: 18:00–20:30

Sunday, June 14, 2026

Excursion: Tour of the Lijiang River

Time: 08:00–15:00

Golf

Time: 08:00–15:00



Program

Friday, June 12, 2026

16:00–18:00 Registration

18:00–20:30 Welcome Reception

Saturday, June 13, 2026

08:00–09:00 Registration

09:00–09:30 **Opening Remarks**

Moderator: **Mr. Xiaojun GUO**, Secretary General of AIPPI China

Mr. Chuanhong LONG, President of AIPPI China, President of CCPIT Patent and Trademark Law Office

Mr. Yuzuru OKABE, President of AIPPI Japan, President of Okabe International Patent Office

Mr. Seong Tahk AHN, President of AIPPI Korea, Partner at Lee & Ko IP

Ms. Lorenza FERRARI HOFER, President of AIPPI, Partner at Schellenberg Wittmer

09:30–10:30 **Keynote Speeches**

Moderator: **Mr. Chuanhong LONG**, President of AIPPI China, President of CCPIT Patent and Trademark Law Office

Keynote Speech: Judicial Protection Status in 2025

Judge from the Supreme People's Court of China

Keynote Speech: IP-Driven Market Development: A Strategic Roadmap

Mr. Mingyan SUN, Chief IP Officer of CATL

10:30–11:00 **Group Photo & Coffee Break**

11:00–12:10 **AI & IP: Bridging Innovation, Creation and Protection (Session I)**

This session provides a comprehensive examination of the complex challenges artificial intelligence poses to existing IP frameworks. We will analyze the evolving relationship between AI and IP law from multiple perspectives, including legal, ethical, and commercial viewpoints. A central focus will be on fostering a constructive dialogue to explore practical approaches for balancing robust IP

protection with the need to promote continued innovation and development in the AI field. The discussion aims to identify pathways for adapting our systems to this transformative technology.

Moderator: **Mr. Deshan LI**, Chief Vice President, Unitalen Attorneys at Law

Panelists:

Speaker to be determined

Ms. Kay KONISHI, Partner, Patent Attorney, Konishi & Nagaoka

Ms. Jeeyeon HAN, Head of the Patent Team, Hanmi Pharm Co., Ltd.

12:10–13:30 **Lunch**

13:30–14:40 **Overseas IP Filing Strategy and Planning (Session II)**

An effective overseas IP filing strategy and planning framework involves a proactive analysis of target countries' legal systems, market potential, and competitive landscape to determine where, when, and what type of IP rights to file. Key components include budget allocation, timing coordination with product launches, and leveraging international treaties. This disciplined approach mitigates risks, prevents costly conflicts, and maximizes the value of a company's innovation portfolio abroad, providing a foundation for long-term international growth and competitive advantage.

Moderator: **Ms. Dan ZOU**, Deputy Director, CCPIT Patent and Trademark Law Office

Panelists:

Mr. Xiaopeng KE, Patent Legal Director, Alibaba Group

Mr. Hisashi KUMAZAKI, Senior Advisor to the Executive Director, AIPPI Japan

Mr. Bomsu YEH, Senior Vice President, KT Corporation

14:40–15:40 **Divisional Applications and Double Patenting (Session III)**

Divisional applications enable applicants to pursue protection for multiple inventions from an initial filing, while maintaining the parent application's priority date. A key challenge is double patenting, which arises when overlapping claims in parent and divisional applications could result in separate patents for the same invention. This session will discuss filing strategies for divisionals and examine how different jurisdictions assess double patenting and address related procedural issues.

Moderator: **Ms. Yali SHAO**, Partner, Liu, Shen & Associates

Panelists:

Ms. Shuang MA, Deputy General Manager, Leader Patent & Trademark Firm

Mr. Makoto IWATA, Vice President, Patent attorney, Nagoya International IP Firm

Mr. Byeong-Hoon YOON, Partner, C&S Patent and Law Office

15:40–16:00 **Coffee Break**

16:00–17:00 **Updates on IP System in each Jurisdiction (Session IV)**

This session provides focused updates on the latest developments in IP systems across China, Japan, and Korea. Experts will share critical insights into recent legislative reforms, significant judicial rulings, and key administrative and procedural changes within each jurisdiction. Designed for practitioners and businesses operating in the region, this session offers actionable knowledge to help navigate the evolving IP landscape, anticipate challenges, and inform strategic decision-making.

Moderator: **Ms. Rui WANG**, Partner, Wanhuida Intellectual Property

Panelists:

Mr. Wei ZHAO, Vice President, China Science Patent & Trademark Agent Ltd.

Mr. Kentaro SATO, Attorney-at-Law, ABE, IKUBO & KATAYAMA

Mr. Peter (SungJin) CHUN, Managing Partner, Muhann Patent & Law Firm

17:00–17:30 **Closing**

Moderator: **Mr. Xiaojun GUO**, Secretary General of AIPPI China

Closing Remark: **Ms. Heather LIN**, Vice President of AIPPI China, Partner at NTD Intellectual Property Attorneys

Introduction to 2027 AIPPI Trilateral Meeting: A Representative of AIPPI Japan

Introduction to 2026 AIPPI World Congress: **Ms. Regina QUEK**, Secretary General of AIPPI

18:00–20:30 **Closing Dinner**

Sunday, June 14, 2026

08:00–15:00 **Tour of the Lijiang River**

08:00–15:00 **Golf**

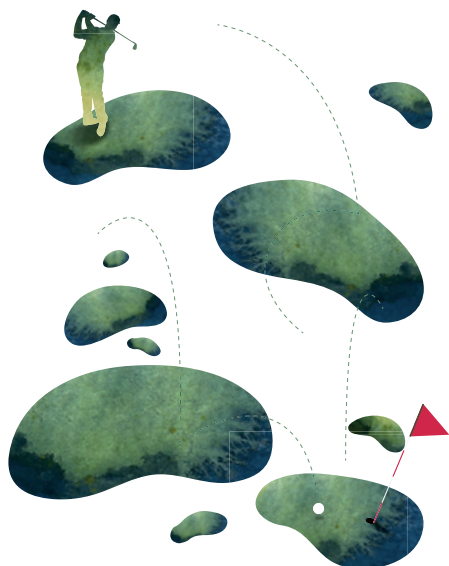
Excursion & Golf

Excursion: Tour of the Lijiang River

Depart from Zhujiang Pier and cruise down the renowned "Essence Section" of the Lijiang River. Celebrated as the world's largest and most picturesque karst landscape, it is often known as the "Hundred-Li Lijiang River Gallery". On both banks, the peaks are lush and green, and the bamboo shadows sway gently. The Lijiang River is like a long scroll of mountains and waters slowly unfolding. Enjoy the essence of the karst peak forest landform throughout the journey and take in the breathtaking scenery of "Guilin's landscape is the best under heaven" at a glance.

Date: June 14, 2026

Time: 08:00–15:00



Golf

Guilin Landscape Golf Club opened in November 1996 as Guangxi's first golf course and one of China's earliest approved golf projects. Spanning 1,850 acres, the 18-hole championship course was designed by American architect Dana Frye to USGA standards, making full use of Guilin's karst landscape. It features three sections—mountain, water, and stone—with a par of 72 and a total length of about 7,200 yards. The front nine are built along the mountainside, the back nine beside the water, and the "stone-view fairway" is meticulously crafted around Guilin's unique rock formations. With its stunning scenery and challenging design, the Club was honored as one of the "Top Ten Destination Golf Courses in China".

Date: June 14, 2026

Time: 08:00–15:00

Location: Guilin Landscape Golf Club

Notice:

- Please load your own golf bag onto the bus at the hotel.
- Attach a name tag with your full name to your golf bag.

Registration

General

The registration deadline is May 30, 2026.

You can register for the 2026 AIPPI China–Japan–Korea Trilateral Meeting [HERE](#).

Registration Fees

	Early Bird (April 22 to May 15)	Regular (May 16 to May 30)	Contents
AIPPI China, Japan and Korea Members	RMB 3270	RMB 4090	Welcome Reception, Meeting, Lunch, and Closing Dinner
Young, In-house, Scholar Members from AIPPI China, Japan and Korea	RMB 2040	RMB 2720	
In-house Observers	RMB 2380	RMB 3070	
Observers	RMB 4090	RMB 4770	
Speakers, Special Guests, Media Partners	Free	Free	
Accompanying Family Persons	RMB 2040	RMB 2720	Welcome Reception & Closing Dinner
Excursion	RMB 680	RMB 680	Transportation, Admission Fee, Guide and Lunch
Golf	RMB 1020	RMB 1020	Transportation, Green Fees, Caddy Service and Lunch

- Observers generally refer to individuals who are not members from AIPPI China, Japan and Korea.
- In-house professionals refer to individuals affiliated with a corporate entity (excluding law firms and service providers).
- Office colleagues are not considered accompanying family persons.
- Excursion and golf are optional.
- Registration dates are based on Beijing Time.

Payment Method

1. Overseas Bank Transfer

- The only accepted payment method is bank transfer.
- Please ensure that the payment reference includes: **2026 AIPPI Trilateral Meeting**.
- International remitters shall bear any bank charges incurred outside China.

Overseas Bank Transfer Details

Account Name: Guangxi CAP Group Co., Ltd.

Bank Name: China Everbright Bank, Nanning Branch

Bank Address: 35/F, Taiping Financial Building, No. 16 Songxiang Road, Liangqing District, Nanning, China

Account Number: 7888 0188 0002 0324 5

CNAPS Code: 303611078888

SWIFT Code: EVERCNBJNN1

Contact Person: Ms. Wei CHEN, [Email: pennyliaise@163.com](mailto:pennyliaise@163.com).

2. 中国境内汇款 / Domestic Bank Transfer (China)

- 只接受银行转账，汇款时务必备注：**2026 年中日韩三国会**。

境内收款账户信息

账户名称：广西东博社集团有限公司

开户行：中国光大银行南宁东葛支行

账号：7888 0188 0002 0324 5

联行号：303611078888

咨询缴费及发票事宜，请联系：陈维，[邮箱: pennyliaise@163.com](mailto:pennyliaise@163.com)。

Cancellation Policy

All Cancellations must be notified in writing to the Secretariat.

All refunds will be made after the end of the Meeting for administrative reasons, and bank charges will be deducted from the refunded amount.

50% refund is available until June 5, 2026.

No refunds will be issued for cancellations received after **June 6, 2026**.

Accommodation

Hotel Reservation

The venue for the 2026 AIPPI Trilateral Meeting is the Guilin Exhibition International Hotel (<http://www.glhzhotel.com/en/>). Please select your preferred room type when completing your registration, and we will request the hotel to reserve a room for you. Room charges are to be settled upon checkout. For any changes to your reservation, please contact sales@glhzhotel.com.

For other hotel recommendations, please contact us at dev@ccpit-patent.com.cn.

Accommodation Fees

Room Type	Room Rate (RMB/Night)
Deluxe King	400
Deluxe Twin	400
Executive King	500
Executive Twin	500
Executive Suite	1200

Rates include:

- Complimentary breakfast (1-2 persons per room)
- Mini-bar access, self-service laundry, and laundry service
- Indoor swimming pool, gym, and steam room
- Complimentary Wi-Fi in all common areas and guest rooms
- Service charge and VAT

Transportation

Flight

Guilin Liangjiang International Airport (KWL) is located approximately 28 km (about 17.4 miles) from the city center.

Flights to Guilin are available from major Chinese cities, including Beijing, Shanghai, Qingdao, Chengdu, Hangzhou, Nanjing, Jinan, Hong Kong, and Macau, as well as from several other countries such as South Korea, Vietnam, Malaysia, and Thailand.

High-speed Train

About 80 high-speed trains run daily between Guangzhou and Guilin, covering 433 km (269 miles) in 2 to 5.5 hours. You may transfer from Guangzhou to Guilin.

Guilin

Guilin Railway Station

Located in the city center with good transport links to nearby attractions and the other two stations. However, only a few trains to/from Guangzhou operate here.

Guilin North Railway Station

Situated in the northern suburbs. With several city bus routes and a long-distance bus station nearby, passengers can easily connect to other destinations.

Guilin West Railway Station

Though many trains stop here, the station is less convenient to reach. It is relatively far from the city center and served by only a few city bus routes.

How to Get to the Hotel

It is highly recommended to take a taxi directly from the airport or train station to the venue hotel.

Guilin Liangjiang International Airport (KWL) is 30 km away from the hotel.

Guilin Railway Station is 2.4 km away from the hotel.

Guilin North Railway Station is 10 km away from the hotel.

Guilin West Railway Station is 14 km away from the hotel.

Visa Application

If you require an invitation letter to support your visa application, please contact us at dev@ccpit-patent.com.cn.

To facilitate the process, kindly provide the following information:

- Full name as on passport
- Gender
- Passport number
- Passport issue and expiry dates
- Date of birth
- Occupation and employer
- Telephone number
- Dates of stay in China
- Any additional details specified by the embassy

Contact

For any inquiries, please contact:

Secretariat of AIPPI China

10/F, Ocean Plaza, 158 Fuxingmennei Street, Beijing 100031

Mr. Xiaojun GUO, Ms. Hui ZHAO

Tel: +86-10- 66046336, +86-10- 66046121

Email: aippichina@ccpit-patent.com.cn; guoxj@ccpit-patent.com.cn

Website: www.aippi.org.cn